



HUTA ŁABĘDY



Üretim Programı
Production Programme

İÇİNDEKİLER

Table of contents



3-4

Sections for mine roadway supports and tunnels
Tüneller ve madenlerde kullanılan profiller

5-8

Mine roadway supports
Madenlerde kullanılan profiller

9-12

Accessories for mine supports
Maden profilleri için ek donanımlar

13

Branch off supports type "Labedy"
Özel üretim tahkimat tipleri

14

U-Profil
U-profiller

15

I-section INP
I-profiller INP

16

I section I 155
I 155 tip I profiller

17-18

Cold-formed Hollow Sections
Soğuk şekillendirilmiş kapalı profiller



Sections for mine roadway supports and tunnels Tüneller ve madenler için tahkimatlar



Huta Labydy Stock Company produces sections for mine roadway supports and tunnels in the series of types V16,5, V21, V25, V29, V32, V34, V36 which we produce in grades of steel, as following:

Huta Labydy tüneller ve maden yollarında kullanılmak üzere, V16.5, V21, V25, V29, V32, V34, V36 profillerini farklı çelik kalitesinde üretebilmektedir.

25G2 – PN-89/H-84023/05/Az2
34GJ – PN-89/H-840023/05
31Mn4 – DIN 21530
S480W – PN-H-84042
S550W – ZN/TT/2012/1

Steel grade - chemical composition

Çelik kalitesi - kimyasal bileşimi

Grade Kalite	C	Mn	Si	P max	S max	Cr	Cu	V max	Ni max	Mo max	Ti max	Ai max
	[%]											
25G2 wg PN-89/H-84023/05/Az2	0,20 0,29	1,10 1,60	0,20 0,40	0,030	0,040	max 0,30	max 0,30	---	0,30	0,10	---	---
34GJ wg PN-89/H-840023/05	0,30 0,38	0,70 0,95	0,15 0,30	0,045	0,045	---	---	---	---	---	---	min 0,02
31Mn4 wg DIN 21530	0,28 0,36	0,80 1,10	0,20 0,50	0,035	0,035	---	max 0,35	---	---	---	---	min 0,02
S480W wg PN-H-84042	max 0,25	max 1,70	max 0,50	0,035	0,035	0,25 0,45	0,25 0,45	0,15	0,30	---	0,04	min 0,025
S550W wg ZN/TT/2012/1	max 0,25	max 1,70	max 0,50	0,035	0,035	0,25 0,45	0,25 0,45	0,15	0,30	---	0,04	min 0,025

Steel grade - mechanical properties

Çelik kalitesi - mekanik özellikler

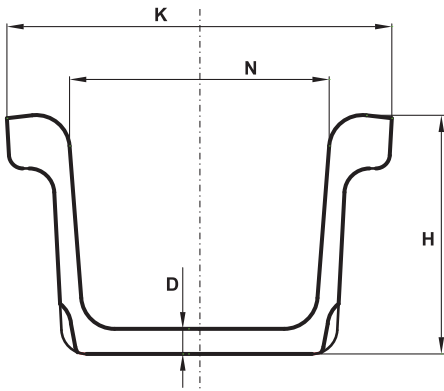
Grade Kalite	Yield point	Tensile strength	Elongation	Impact strength	
	Akma Dayanımı	Çekme Mukavemeti	Uzanim	Darbe dayanımı	
			A5	KCU2A	DVM
	[MPa] min.	[MPa] min.	[%] min.	[J/cm ²]	[J]
25G2	340	550	18	30	---
34GJ	340	550	17	30	---
31Mn4	350	550	18	---	18
S480W	480	650	17	30	---
S550W	550	730	18	50	---



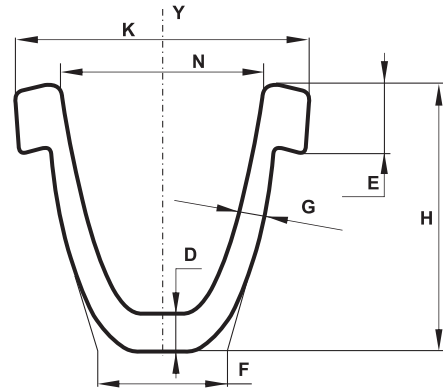
Dimensions according to:
Profil ebatları:

PN-H-93441-3

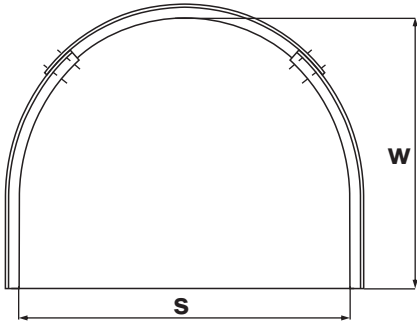
Grade Sınıf	K	N	D	H	I _x	W _x	I _y	W _y	Kesit alanı 1m ağırlığı	Weight of 1 m 1m ağırlığı
	[mm/MM]				[cm ⁴ /cm ⁴]	[cm ³ /cm ³]	[cm ⁴ /cm ⁴]	[cm ³ /cm ³]	[cm ² /cm ²]	[kg/kr]
V16.5	106±1	80±0,5	13±0,6	90,5 ⁺¹ _{-0,6}	186	40	223	42	21,02	16,5
V21	125±1	95,5±0,5	14±0,6	108 ⁺¹ _{-0,6}	335	59,3	394	63	26,8	21
V25	135±1	103,5±0,5	15±0,6	118 ⁺¹ _{-0,6}	464	74,6	540	80	31,7	25
V29	150,5±1	116,5±0,5	16±0,6	124±1	581	87,5	756	100,5	36,3	28,5
V32	171±1	128,3±0,5	16±0,5	137±1	838	121,4	1174	137	40,9	32,1
V34	171±1	128±0,5	16±0,5	137±1	885	124	1190	139	43,5	34,1
V36	171±1	128±0,5	17±0,6	138±1	923	127,6	1229	143,7	45,2	35,5
USG	133±1	95±1	12 ^{+0,5} ₋₁	87±1						24,5



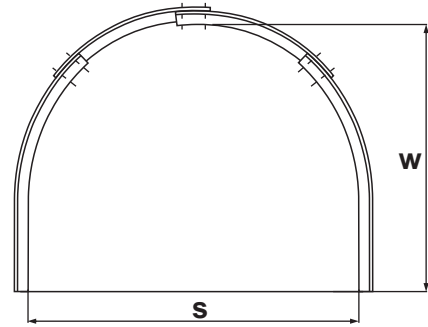
USG



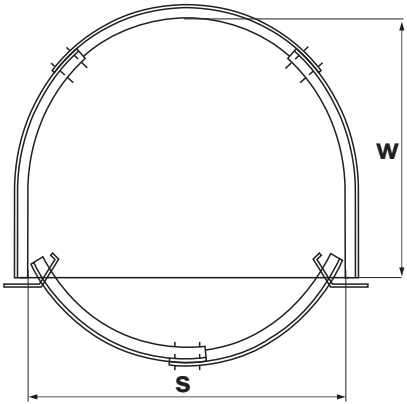
V



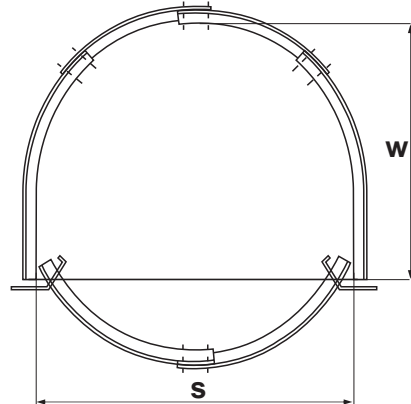
ŁP/3



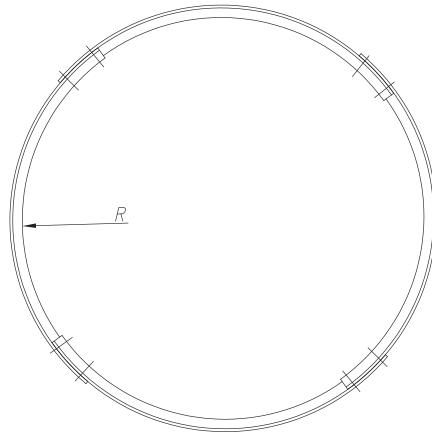
ŁP/4



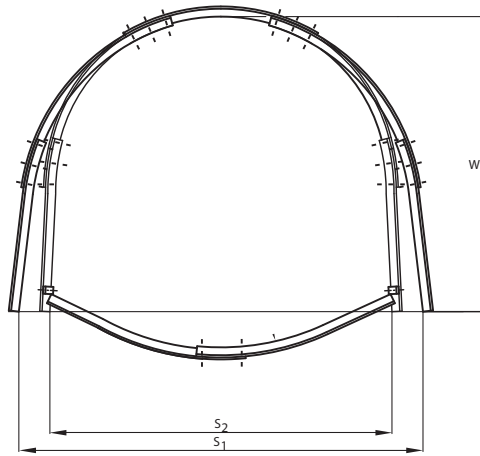
ŁPZ/5



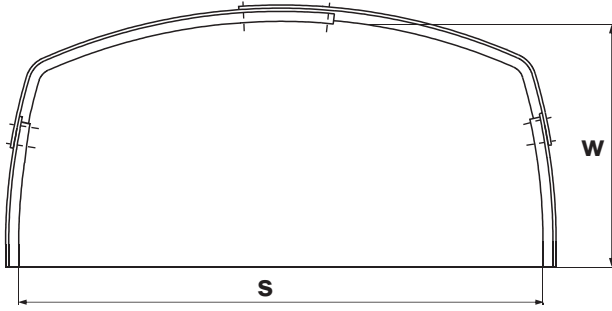
ŁPZ/6



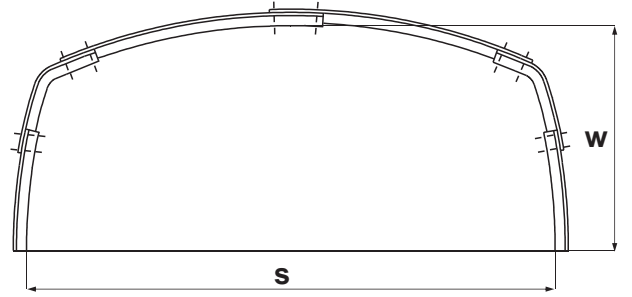
ZOKP



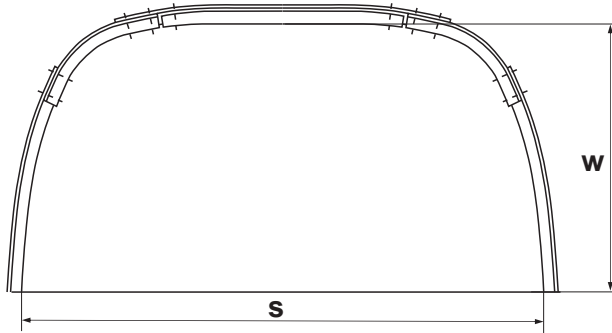
ŁPC, ŁPCZ



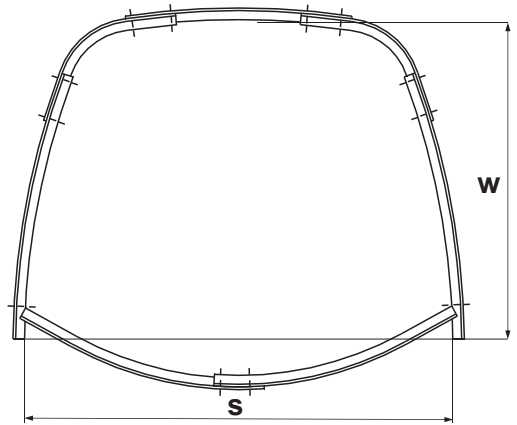
ŁPrP/4



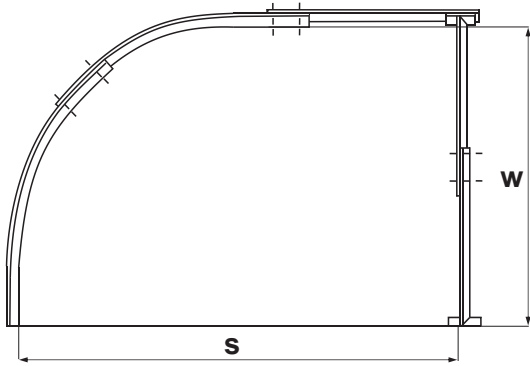
ŁPrP/6



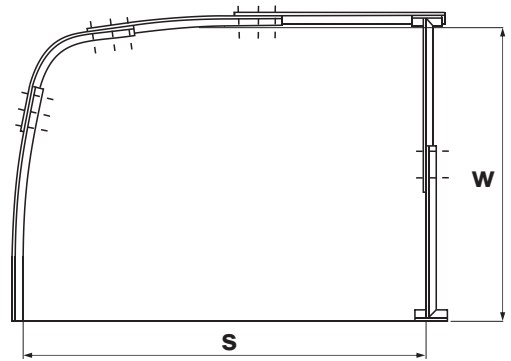
ŁPrw



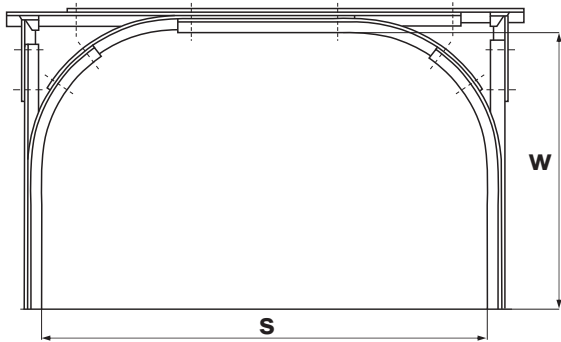
ŁPrPZ/V32
ŁPrPZ/V36



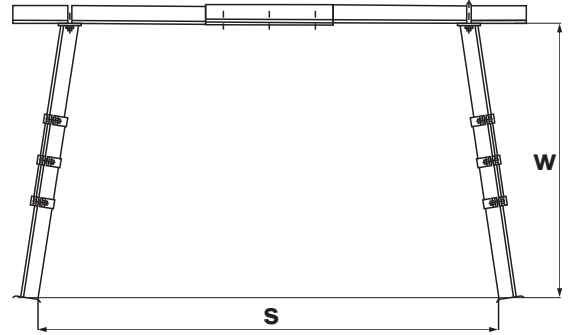
ŁPro A



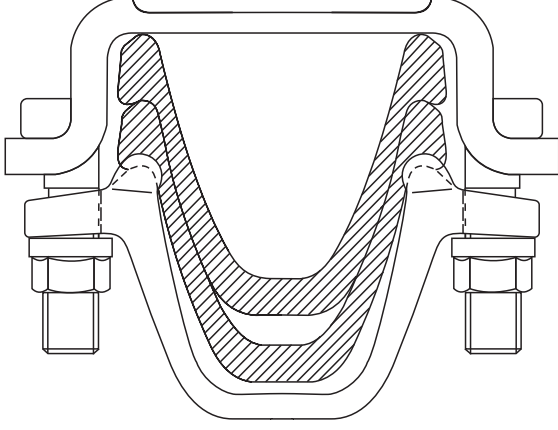
ŁPro B



KaPa

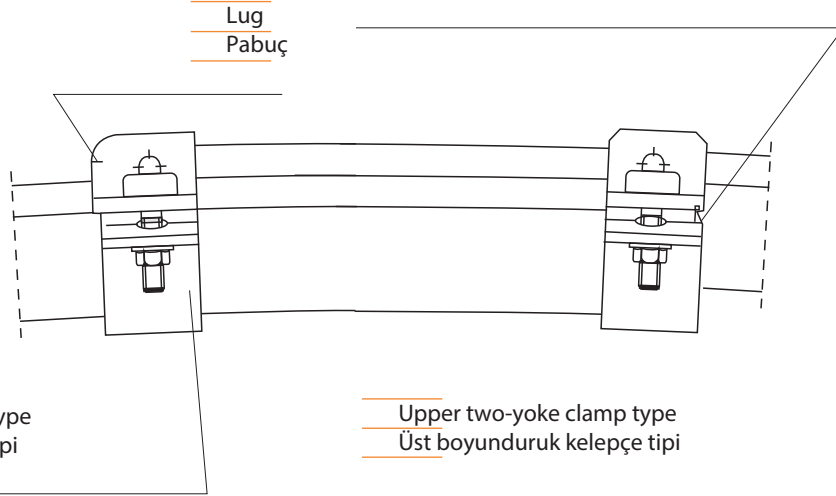


OPP



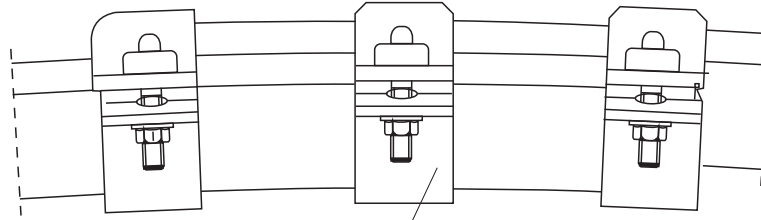
Clamps type SD and SDO according to
SD ve SDO tip kelepçeler

PN-G-15011:2011



Bottom two-yoke clamp type
Alt boyunduruk kelepçe tipi

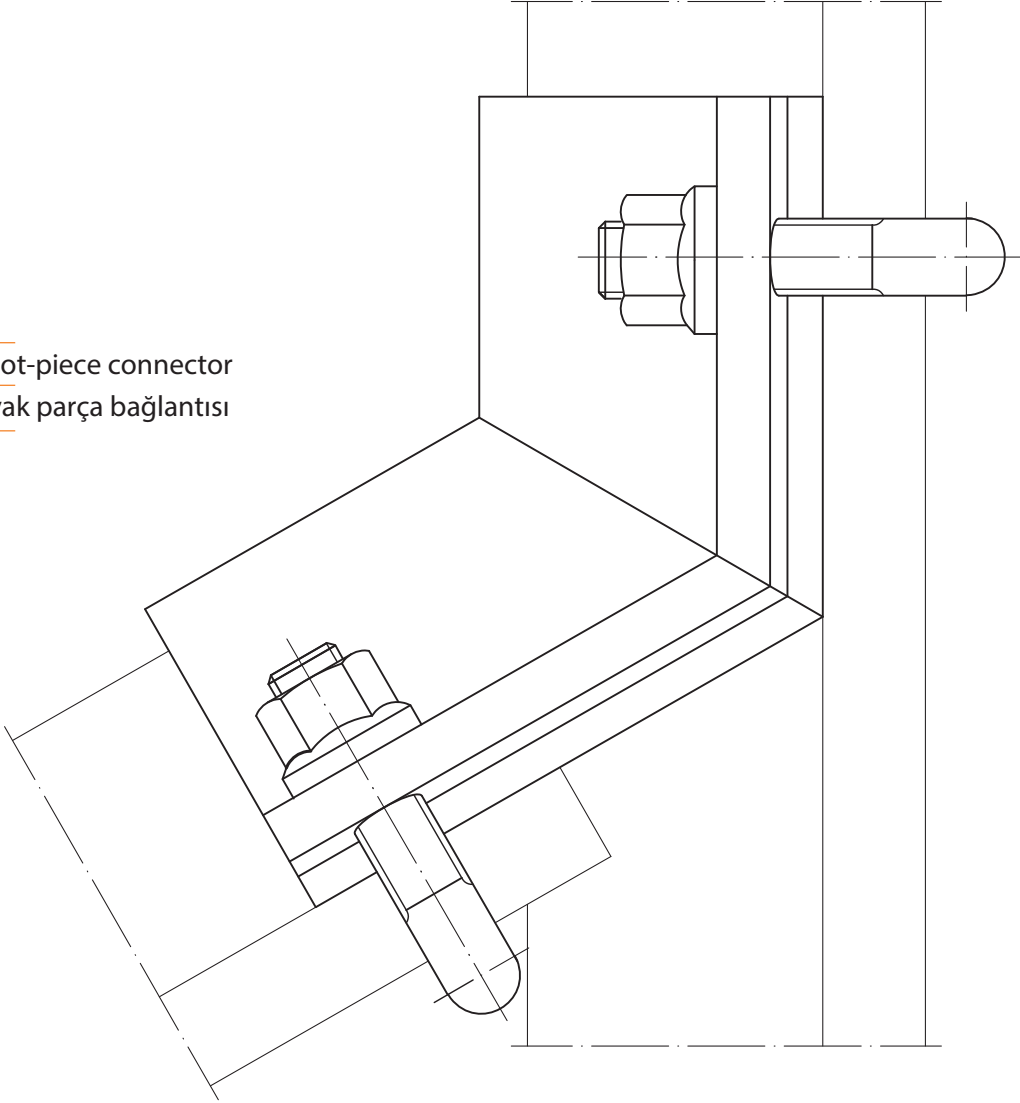
Upper two-yoke clamp type
Üst boyunduruk kelepçe tipi

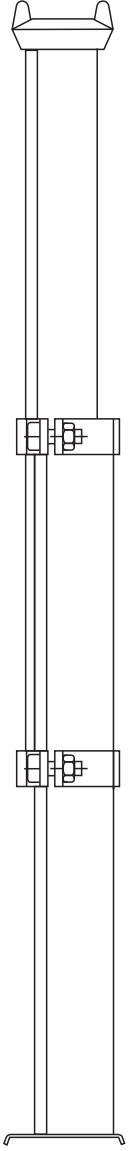


Middle two-yoke clamp type
Ortada boyunduruk kelepçe tipi

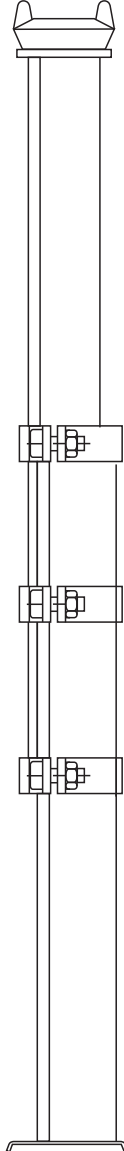


Foot-piece connector
Ayak parça bağlantısı

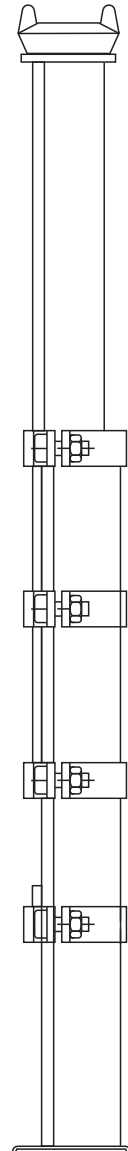




Friction prop type SV
Tahkimat direği SV



Friction prop type SVt
Tahkimat direği SVt

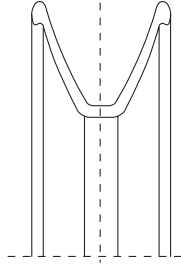


Friction prop type SVtw
Tahkimat direği SVtw



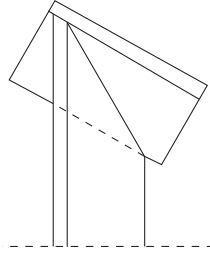
Top bits of props SV

Direk uçları SV



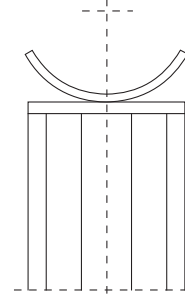
1

Fixed
Sabit



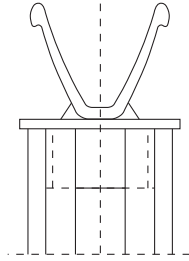
1A

Fixed-inclined
Sabit - Eğimli



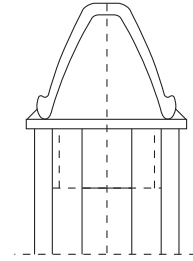
2

For timber props
Ağaç tahkimatları için



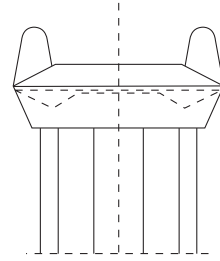
3A

Detachable
Sökülebilir



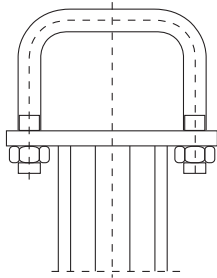
3B

Detachable
Sökülebilir



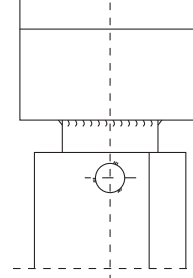
4

SHC - Walent



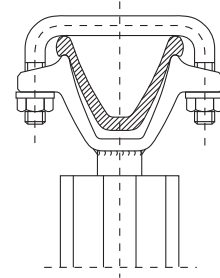
5

Bow-type
Boyunduruk tipi



6

Adjustable
Ayarlanabilir

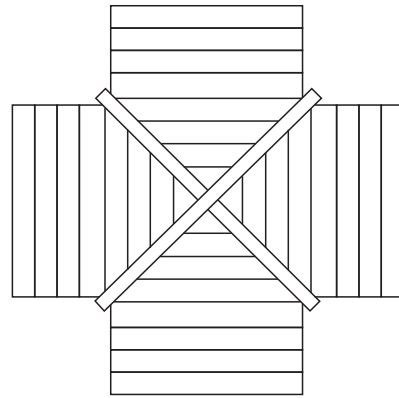
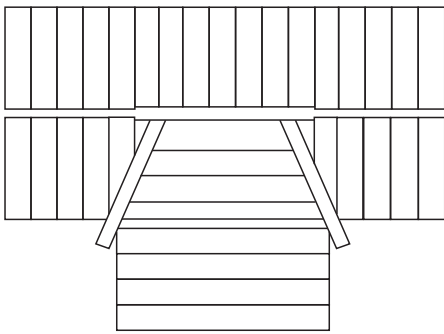
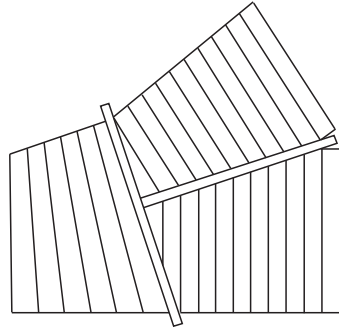
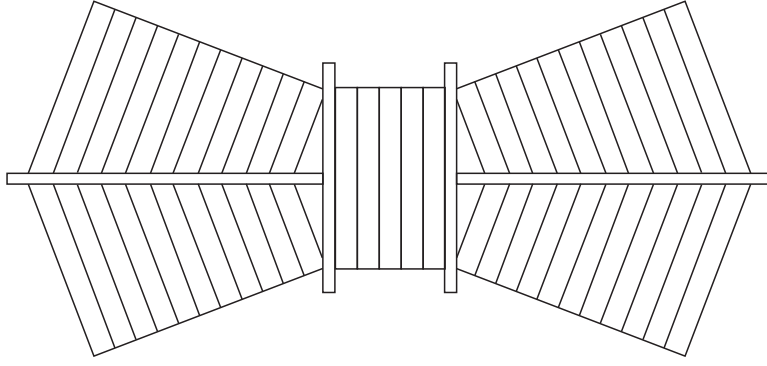


7

Adjustable with a bow
Ayarlanabilir boyunduruk tipi



Branch off supports type "Łabędy"
Özel üretim tahkimatlar





U-Profil



Huta Łabedy manufactures the constructional section in the series C100, C120, C140, C160 and C180 which are in grades of steel:

Huta Labedy yanda görülen çelik sınıflarında C100, C120, C140, C160 ve C180 serisi, inşaat amaçlı U profiller üretmektedir.

S235JR, S 275JR – PN-EN 10025-2:2007

Dimensions according to:

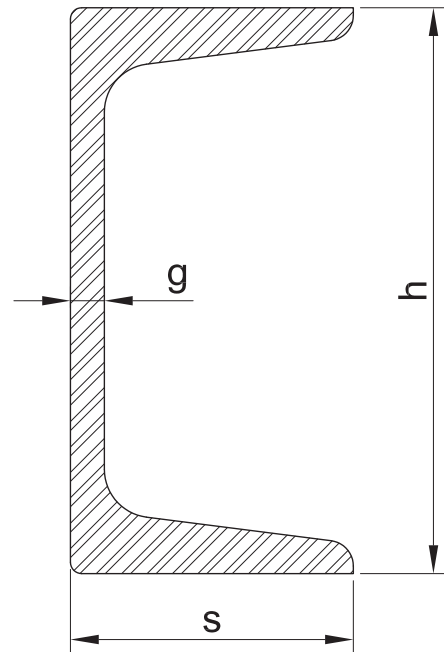
Ölçüler yandaki standartlara göre:

PN-EN 10279:2003
PN-H-93400:2003

Grade	h	Tolerance	s	Tolerance	g	Tolerance	Commercial length	Weight of bundle	Weight of 1 m
Sınıf	h	Tolerans	s	Tolerans	g	Tolerans	Ticari uzunluk	Balya ağırlığı	1m ağırlığı
	[mm/mm]	PN/DIN	[mm/mm]	PN/DIN	[mm/mm]	PN/DIN	[m/m]	[mg/mg]	[kg/kr]
C100	100		50		6			2,5	10,6
C120	120		55		7			2,6	13,4
C140	140	±2,0	60	±2,0±1,5	7	±0,5	±12	3,1	16,0
C160	160		65		7,5			3,6	18,8
C180	180		70		8			3,2	22,0

Precises lengths according to orders's requirements.
Material is not anticorrosions protected, packed in bundles.

Müşteri talebine göre hassas uzunluk.
Malzeme antikorozyon korumaya sahip değildir, Balya halinde paketlenir.





I-section INP I-profil INP



Huta Łabedy Stock Company manufactures the constructional section in the series of types I 120, I 140, which are in grades of steel:

Huta Łabedy I 120 ve I 140 tiplerinde I profilleri inşaat amaçlı kullanılmak üzere yandaki standartlarda üretmektedir.

S235JR, S275JR – PN-EN 10025-2:2007

Dimensions according to:

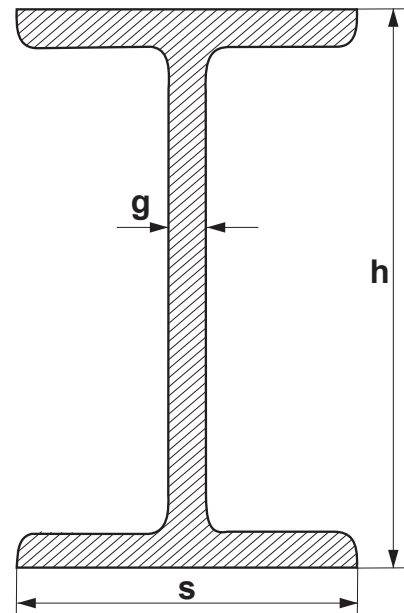
Ebatlar yandaki standartlara göre:

PN-EN 10024:1998,
PN-91-H-93407

Grade	h	Tolerance	s	Tolerance	g	Tolerance	Commercial length	Weight of bundle	Weight of 1 m
	h	Tolerans	s	Tolerans	g	Tolerans	Ticari uzunluk	Balya ağırlığı	1m ağırlığı
	[mm/mm]	PN/DIN	[mm/mm]	PN/DIN	[mm/mm]	PN/DIN	[m/m]	[mg/mg]	[kg/kg]
I 120	120	±2,0	58	±1,5	5,1	+0,5	±12	2,1	11,1
I 140	140	±2,0	66	±1,5	5,7	-1,0	±12	2,7	14,3

Precises lengths according to Orders's requirements. Material is not anticorrosions protected, packed in bundles.

Müşterinin talebine göre hassas uzunluk. Malzeme antikorozyon korumaya sahip değildir, balyalar halinde paketlenir.





I section I 155 I profil I155



'Huta Łabedy' steelworks offers hot-rolled I-bars of the I155 type suitable for rails of overhead trains for the mining industry. The I155 sections are manufactured of the S355J2G3 steel grade to PN-EN 10025-2:2002.

S355J2G3 – PN-EN 10025-2:2002

Huta Labedy madencilik endüstrisinde kullanılabilir sıcak haddelenmiş I155 tipi I profiller üretmektedir. I155 profiller S355J2G3 çelik sınıfında PN-EN 10025-2:2002 standartlarına göre üretilmektedir.

Dimensions according to:

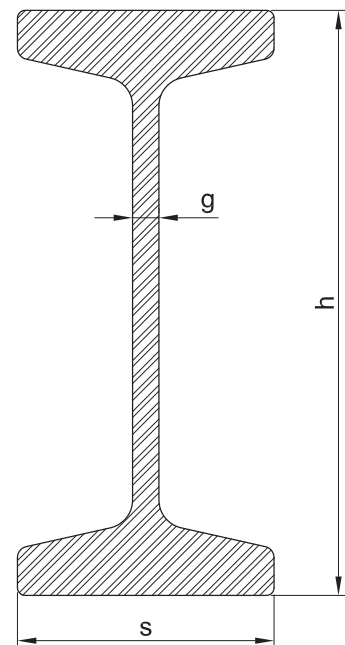
Ebatlar yandaki standartlara göre:

PN-H-93441-10

Grade	h	Tolerance	s	Tolerance	g	Tolerance	Commercial length	Weight of bundle	Weight of 1 m
Sınıf	h	Tolerans	s	Tolerans	g	Tolerans	Ticari uzunluk	Balya ağırlığı	1m ağırlığı
	[mm/mm]	PN/DIN	[mm/mm]	PN/DIN	[mm/mm]	PN/DIN	[m/m]	[mg/mg]	[kg/kg]
I155	155	±1,0	68	±1,5	7	+0,3 -0,5	12	2,8	23,7

The products are cut-to-length according to individual requirements of customers. They are dispatched in bundles with no anticorrosive protection.

Ürünler müşteri taleplerine istinaden istenilen boyutlara kesilir. Balyalar halinde paketlenir ve antikorozyon koruması yoktur.





Cold-formed Hollow Sections Soğuk şekillendirilmiş kapalı profiller



Manufactured in accordance with :

PN-EN 10219

Steel grades:

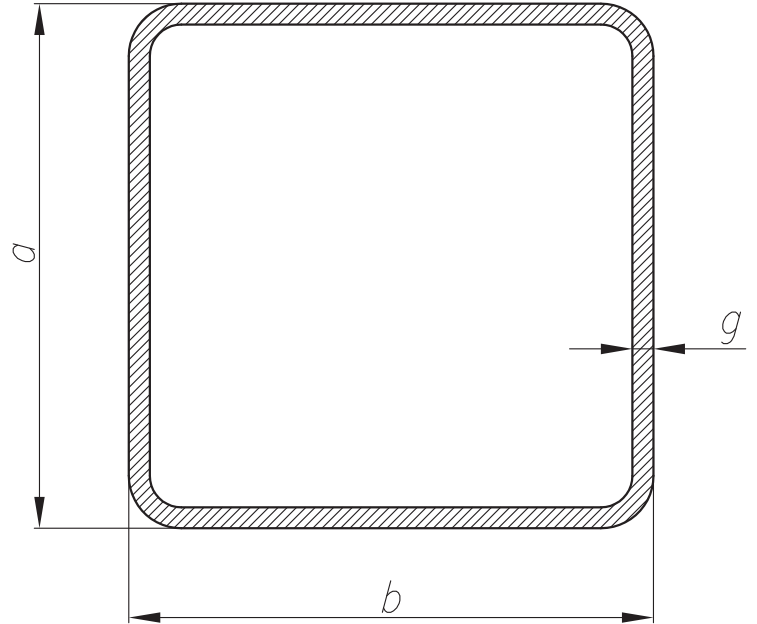
Çelik sınıfı:

PN-EN 10025

S235JR, S235J0,
S235J2
S275JR, S275J0,
S275J2
S355JR, S355J0,
S355J2

Üretim standartları uygunluğu:

Dimensions Ebatlar	Wall thickness Et kalınlığı			
	[mm/MM]			
	3,0	4,0	5,0	6,0
a x b	Weight Ağırlık			
	[mm/mm]		[kg/m] [kr/m]	
70 x 70	6,13	7,97	9,70	11,3
75 x 75	6,60	8,59	10,5	12,3
80 x 80	7,07	9,22	11,3	13,2
90 x 90	8,01	10,5	12,8	15,1
100 x 100	8,96	11,7	14,4	17,0
110 x 110	9,90	13,0	16,0	18,9
120 x 120	10,8	14,2	17,5	20,7
125 x 125	11,3	14,9	18,3	21,7
130 x 130	11,8	15,5	19,1	22,6



It is possible to produce any section of an untypical size for which the width to height ratio is not higher than 2.5.
Width range: from 80 to 160 mm,
height range: from 50 to 100 mm

En boy oranı 2,5 üzerinde olmadığı sürece ebatları standart dışında olsa da bu tip profiller üretilebilir.
En aralığı : 80 -160mm arasında,
Boy aralığı: 50 - 100mm arasında.



Cold-formed Hollow Sections Soğuk şekillendirilmiş kapalı profiller



Length range:

Uzunluk aralığı:

6–12 m/m

Bundles up to 3 t. Bundles fastened with a steel strap.

Balyalar 3 tona kadar. Balyalar çelik şerit ile sarılır.

Dimensions Ebatlar	Wall thickness Et kalınlığı			
	[mm/mm]			
	3,0	4,0	5,0	6,0
a x b	Weight Ağırlık			
[mm/mm]	[kg/m]	[kg/m]	[kg/m]	[kg/m]
80 x 50	5,66	7,34	8,91	10,4
80 x 60	6,13	7,97	9,70	11,3
80 x 70	6,60	8,59	10,5	12,3
90 x 50	6,13	7,97	9,70	11,3
90 x 60	6,60	8,59	10,5	12,3
90 x 70	7,07	9,22	11,3	13,2
90 x 80	7,54	9,85	12,0	14,2
100 x 50	6,60	8,59	10,5	12,3
100 x 60	7,07	9,22	11,3	13,2
100 x 70	7,54	9,85	12,0	14,2
100 x 80	8,01	10,5	12,8	15,1
110 x 50	7,07	9,22	11,3	13,2
110 x 60	7,54	9,85	12,0	14,2
110 x 70	8,01	10,5	12,8	15,1
120 x 50	7,54	9,85	12,0	14,2
120 x 60	8,01	10,5	12,8	15,1
120 x 80	8,96	11,7	14,4	17,0
120 x 100	9,90	13,0	16,0	18,9
130 x 60	8,48	11,1	13,6	16,0
140 x 60	8,96	11,7	14,4	17,0
140 x 70	9,43	12,4	15,2	17,9
140 x 80	9,90	13,0	16,0	18,9
140 x 100	10,8	14,2	17,5	20,7
150 x 75	10,1	13,3	16,4	19,3
150 x 100	11,3	14,9	18,3	21,7
160 x 80	10,8	14,2	17,5	20,7
160 x 90	11,3	14,9	18,3	21,7
160 x 100	11,8	15,5	19,1	22,6

